

FINAL (8-6-15)

New Faculty Orientation

August 17-18, 2015



NEW FACULTY ORIENTATION AGENDA

Monday, August 17th – FSU TURNBULL CONFERENCE CENTER

9:30 a.m. Registration



10:00 a.m. Welcome

Janet Kistner
*Interim Vice President for Faculty
Development and Advancement*



10:05 a.m. President's Welcome and Introduction of
FSU Vice Presidents

John E. Thrasher
University President



10:20 a.m. Introduction of New Faculty

Marcy Driscoll
Dean, College of Education

FACULTY DEVELOPMENT



10:50 a.m. Greetings from the Provost; and
Expectations, Promotion and Tenure

Sally E. McRorie
*Interim Provost and Executive Vice
President for Academic Affairs*



11:10 a.m. Office of Faculty Recognition

Peggy Wright-Cleveland
Director, Office of Faculty Recognition



11:25 a.m. University Libraries

Julia Zimmerman
Dean, University Libraries



11:40 a.m. FSU Libraries Office of Digital Research
and Scholarship (DRS)

Micah Vandegrift
Digital Scholarship Coordinator

11:50 a.m. Support for Faculty Development

Janet Kistner
*Interim Vice President for Faculty
Development and Advancement*

12:00 p.m. Luncheon

FINANCE AND ADMINISTRATION



1:05 p.m. Finance and Administration Initiatives

Kyle Clark
*Vice President for Finance
and Administration*

NEW FACULTY ORIENTATION AGENDA

Monday, August 17th – FSU TURNBULL CONFERENCE CENTER (*continued*)

OUR RESEARCH AND SERVICE MISSIONS



1:15 p.m.

The Graduate School
and

Nancy Marcus
Dean, The Graduate School



The Division of Undergraduate Studies

Karen Laughlin
Dean, Undergraduate Studies



1:35 p.m.

Office of Research

Gary Ostrander
Vice President for Research



1:50 p.m.

Pursuing Your Research

Thomas Albrecht-Schmidt
*Gregory R. Choppin Professor of
Chemistry and Biochemistry*

2:10 p.m.

Break – 15 minutes



2:25 p.m.

Equal Opportunity

Renisha Gibbs
*Assistant Vice President, Human Resources and
Chief of Staff, Finance and Administration*



2:35 p.m.

Title IX Compliance

Jennifer Broomfield
Director, Title IX



2:45 p.m.

Employee Assistance Program

Mary Wilkes
*Director, Employee Assistance Program
(EAP)*



2:55 p.m.

Campus Safety and Responding
to Student Issues
and

Chief David Perry
Assistant Vice President for Safety and Chief of Police



Vicki Dobiyanski
Dean of Students






NEW FACULTY ORIENTATION AGENDA



Monday, August 17th – FSU TURNBULL CONFERENCE CENTER *(continued)*

- 3:15 p.m. Announcements and Closing Remarks Janet Kistner
*Interim Vice President for Faculty
Development and Advancement*
- (Those who have already signed-up for benefits are welcome to leave for the day)*
- 3:20 p.m. HR—Insurance and Benefits *(optional)* Kelly McLaughlin
- 3:40 p.m. HR—Retirement *(optional)* Michael Horgan
- 4:00 p.m. Program Ends for the Day
*Benefits and Retirement Representatives will remain after the
session to assist with questions and the enrollment process.*

Tuesday, August 18th – FSU TURNBULL CONFERENCE CENTER

- 8:30 a.m. Breakfast / Social Time
-  9:00 a.m. Greetings from the Faculty Senate President Susan Fiorito
*Professor and Chair, Department of
Entrepreneurship, Strategy and Information Systems*
-  9:10 a.m. United Faculty of Florida Matthew Lata
*UFF-FSU Chapter President
Professor, College of Music*
-  9:20 a.m. International Programs:
Teaching Around the World James Pitts
Director, International Programs

OUR TEACHING MISSION

-  9:35 a.m. A Portrait of the FSU Student Mary Coburn
Vice President for Student Affairs
-  9:55 a.m. Teaching the FSU Student Annette Schwabe
*Distinguished Teaching Professor
Associate Dean, Undergraduate Studies
Director, Liberal Studies*

NEW FACULTY ORIENTATION AGENDA

Tuesday, August 18th – FSU TURNBULL CONFERENCE CENTER (*continued*)

10:15 a.m. Break – 30 minutes

10:45 a.m. Resources for Teaching the FSU Student:
Blackboard



John Braswell
Blackboard User Support Administrator



Distance Learning, Testing and
Course Evaluations

Nancy Guidry
*Evaluation and Assessment Faculty,
Office of Distance Learning*



Office of the Registrar

Kimberly Barber
University Registrar



Academic Honor Policy

Jennifer Buchanan
*Associate Vice President for Faculty
Development and Advancement*



“Boots to Books”

Col. Billy Francis (Ret.)
Director, FSU Student Veteran’s Center



Academics in Athletics

Greg Beaumont
*Associate Dean and Senior Associate
Athletics Director for Academic Services*



11:45 a.m. Critical Thinking Initiative

Lynn Hogan
Director, Critical Thinking Initiatives

12:00 p.m. Announcements and Closing Remarks

Janet Kistner
*Interim Vice President for Faculty
Development and Advancement*

12:05 p.m. Luncheon

1:00 p.m. A Student-Centered Approach to Mentoring
(*optional – 214 Turnbull Center*)

Nancy Marcus
Dean, The Graduate School

REMINDER: The drop-in FEAS (Faculty Expertise and Advancement System) Workshop is being held on August 19 from 3:00-5:00pm in HR’s room UCA-6244. Questions – contact Tiffany Phillips, tphillips@fsu.edu or 5-8203.

SPEAKER DIRECTORY (CONTINUED)

MATTHEW LATA	<i>uff-fsu.org</i>	<i>UFF-FSU Chapter President; Professor,</i>
<i>mlata@fsu.edu — 202N Housewright Music Bldg. — MC: 1180 — 644-0408 — fax 644-2033</i>		<i>College of Music</i>
KAREN LAUGHLIN	<i>undergrad.fsu.edu</i>	<i>Dean of Undergraduate Studies</i>
<i>klaughlin@admin.fsu.edu — 3300 University Center Bldg. A — MC: 2460 — 644-2740 — fax 644-6494</i>		
NANCY MARCUS	<i>gradschool.fsu.edu</i>	<i>Dean of The Graduate School</i>
<i>nmarcus@fsu.edu — 314 Westcott Bldg. — MC: 1410 — 644-3501 — fax 644-2969</i>		
SALLY MCRORIE	<i>provost.fsu.edu</i>	<i>Interim Provost and Executive</i>
<i>smcrorie@fsu.edu — 211 Westcott Bldg. — MC: 1480 — 644-1259 — fax 644-3375</i>		<i>Vice President for Academic Affairs</i>
GARY OSTRANDER	<i>www.research.fsu.edu</i>	<i>Vice President for Research</i>
<i>gary@fsu.edu — 3019 Westcott Bldg. — MC: 1330 — 644-3347 — fax 645-0108</i>		
CHIEF DAVID PERRY	<i>www.police.fsu.edu</i>	<i>Assistant Vice President for Safety and</i>
<i>dlperry@admin.fsu.edu — 108 Tanner Hall–Public Safety Bldg. — MC: 4215 — 644-1240 — fax 644-3205</i>		<i>Chief of Police</i>
JAMES PITTS	<i>international.fsu.edu</i>	<i>Director, International Programs</i>
<i>jpitts@admin.fsu.edu — 5500 University Center Bldg. A — MC: 2420 — 644-0538 — fax 644-6185</i>		
ANNETTE SCHWABE	<i>coss.fsu.edu/sociology</i>	<i>Distinguished Teaching Professor; Associate Dean,</i>
<i>aschwabe@fsu.edu — 526 Bellamy Bldg. — MC: 2270 — 644-4456 — fax 644-6208</i>		<i>Undergraduate Studies;</i>
		<i>Director, Liberal Studies</i>
JOHN THRASHER	<i>president.fsu.edu</i>	<i>University President</i>
<i>jthrasher@fsu.edu — 211 Westcott Bldg. — MC: 1470 — 644-1085 — fax 644-9936</i>		
MICAH VANDEGRIFT	<i>guides.lib.fsu.edu</i>	<i>Scholarly Communication Librarian</i>
<i>mvandegrift@fsu.edu — 305A Strozier Library Bldg. — MC: 2047 — 645-9756 — fax 644-5016</i>		
MARY WILKES	<i>vpfa.fsu.edu/Employee-Assistance-Program</i>	<i>Director, Employee Assistance Program</i>
<i>mawilkes@fsu.edu — 937 W. Jefferson St. — MC: 4190 — 645-3272 — fax 644-1043</i>		
PEGGY WRIGHT-CLEVELAND	<i>ofr.fsu.edu</i>	<i>Director, Office of Faculty Recognition</i>
<i>mwrightc@fsu.edu — 115B Westcott Bldg. — MC: 1281 — 645-8202 — fax 644-3375</i>		
JULIA ZIMMERMAN	<i>lib.fsu.edu</i>	<i>Dean, University Libraries</i>
<i>jzimmerman@fsu.edu — 305A Strozier Library Bldg. — MC: 2047 — 644-5211 — fax 644-5016</i>		



IMPORTANT CONTACT INFORMATION

HR Benefits Office	<i>www.hr.fsu.edu</i>	644-4015
Last name A–M — Kelly McLaughlin		644-9615
Last name N–Z — Kathy Worthman		644-8732
HR Retirement Office	<i>www.hr.fsu.edu</i>	644-9509
Office of Faculty Development and Advancement	<i>fda.fsu.edu</i>	644-6876
Office of Faculty Recognition	<i>ofr.fsu.edu</i>	645-8203
Blackboard (Bb)	<i>campus.fsu.edu</i>	help@campus.fsu.edu or 644-8004
myFSU Portal Help Desk	<i>servicecenter.fsu.edu</i>	644-HELP (4357)
Parking Services	<i>transportation.fsu.edu</i>	644-5278
FSU Card Center	<i>fsucard.fsu.edu</i>	644-7777
Directory Assistance (on-campus)	<i>www.fsu.edu / directory</i>	644-2525
Emergency Information (as needed)	<i>alerts.fsu.edu</i>	644-INFO (4636)
FSU Police Emergency		911
FSU Police Non-Emergency		311 or 644-1234
Employee Assistance Program (EAP)	<i>vpfa.fsu.edu / Employee-Assistance-Program</i>	644-2288



NEW FACULTY DIRECTORY 2015-2016

COLLEGE OF ARTS AND SCIENCES



MARC VAN WERT

COLONEL, U.S. AIR FORCE

Department of Aerospace Studies, Air Force ROTC
Degree Institution: Embry-Riddle Aeronautical University, M.S.
Teaching Interests: Leadership, ethics, aeronautics, aviation, and international studies.



KRISTIN DOWELL

ASSOCIATE PROFESSOR

Department of Anthropology
Degree Institution: New York University, Ph.D.
Research Interests: Research has been conducted with urban Aboriginal filmmakers in Vancouver, Canada for over twelve years. Research interests explore the intersections of visual anthropology, Native American cultural traditions, contemporary art, and global Indigenous media production.



TANYA PERES

ASSOCIATE PROFESSOR

Department of Anthropology
Degree Institution: University of Florida, Ph.D.
Research Interests: The relationships between ancient humans and animals, especially how animals were incorporated into the worldview of Native Americans living in the Southeastern United States.



JIAN FENG

ASSISTANT PROFESSOR

Department of Biological Science
Degree Institution: University of California–Los Angeles, Ph.D.
Research Interests: Epigenetic mechanisms of neuropsychiatric disorders.



LEITHEN M'GONIGLE

ASSISTANT PROFESSOR

Department of Biological Science
Degree Institution: University of British Columbia (Canada), Ph.D.
Research Interests: Conservation of pollinators in agriculture and sexual selection/species co-existence.



WEIKUAN YU

ASSOCIATE PROFESSOR

Department of Computer Science
Degree Institution: The Ohio State University, Ph.D.
Research Interests: These include big data analytics, high-performance computing, computer architecture, I/O and storage systems, as well as interdisciplinary topics such as computational genomics, environmental simulation and climate modeling.

NEW FACULTY DIRECTORY 2015-2016

COLLEGE OF ARTS AND SCIENCES



JEREMY OWENS ASSISTANT PROFESSOR
Department of Earth, Ocean and Atmospheric Sciences
Degree Institution: University of California–Riverside, Ph.D.
Research Interests: Understanding the role of ocean chemistry on biological evolution and extinctions during major climatic events for coastal and marine oceanography.



JAMIE FUMO ASSOCIATE PROFESSOR
Department of English
Degree Institution: Princeton University, Ph.D.
Research Interests: Specializing in medieval English literature and culture, particularly Geoffrey Chaucer and his contemporaries, work engages with intertextuality and literary reception, medieval conceptions of authorship, and the transmission of classical texts into early vernacular traditions.



JOHN RIBÓ ASSISTANT PROFESSOR
Department of English
Degree Institution: University of North Carolina–Chapel Hill, Ph.D.
Research Interests: A focus on legacies of the Haitian Revolution in contemporary Caribbean Latina/o cultural production, and the portrayal of Latina/o bodies in popular culture.



ANNA AMUNDSON TEACHING FACULTY I
Department of History
Degree Institution: Florida State University, Ph.D.
Research Interests: Modern American history, particularly immigration, religion and gender, and analyzing the development of religious social service agencies that partnered with the U.S. government and the United Nations to provide aid to refugees in Europe after World War II.



JAMES A. PALMER ASSISTANT PROFESSOR
Department of History
Degree Institution: Washington University–St. Louis, Ph.D.
Research Interests: Medieval European history, focused on late medieval Italy, on the political, cultural, and religious history of the medieval Italian cities.

NEW FACULTY DIRECTORY 2015-2016

COLLEGE OF ARTS AND SCIENCES



DIANE R. MALTBY

TEACHING FACULTY I

Department of Mathematics

Degree Institution: Florida International University, M.S.

Research Interests: The ways technology should be used to enhance learning mathematical concepts.



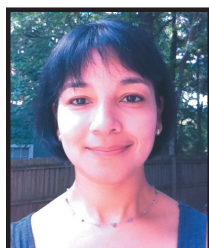
LINGJIONG ZHU

ASSISTANT PROFESSOR

Department of Mathematics

Degree Institution: New York University, Courant Institute of Mathematic Sciences, Ph.D.

Research Interests: Financial mathematics: limit order books, structural models, option pricing; and probability: point processes, random graphs, large deviations.



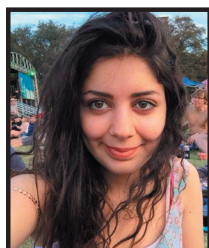
MARIA ALEJANDRA GUTIERREZ

TEACHING FACULTY I

Department of Modern Languages and Linguistics

Degree Institution: University of Virginia, Ph.D.

Research Interests: Hispanic contemporary literature and theater.



REEMA BARAKAT

TEACHING FACULTY I

Department of Modern Languages and Linguistics

Degree Institution: University of Texas–Austin, M.A.

Research Interests: Second language pedagogy and discourse analysis.



JEANNINE MURRAY-ROMÁN

ASSISTANT PROFESSOR

Department of Modern Languages and Linguistics

Degree Institution: University of California–Los Angeles, Ph.D.

Research Interests: Comparative Caribbean literatures and digital humanities with an emphasis on postcolonial, transnational, and performance studies.

NEW FACULTY DIRECTORY 2015-2016

COLLEGE OF ARTS AND SCIENCES



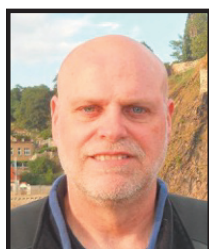
ARIEL STILERMAN

ASSISTANT PROFESSOR

Department of Modern Languages and Linguistics

Degree Institution: Columbia University, Ph.D.

Research Interests: Classical, medieval, and early modern Japanese literature and cultural history, Japanese art history, and Japanese drama. Additional interests include Psychoanalysis and the Tea Ceremony.



MARK LeBAR

PROFESSOR

Department of Philosophy

Degree Institution: University of Arizona, Ph.D.

Research Interests: Moral and political philosophy with a current focus on accounts of the nature of practical rationality and normativity. Also, conceptions of justice as a character trait, and as a concern for social and political institutions.



SERGIO ALMARAZ-CALDERON

ASSISTANT PROFESSOR

Department of Physics

Degree Institution: University of Notre Dame, Ph.D.

Research Interests: Experimental nuclear astrophysics, nuclear structure and nuclear reactions; in particular, the study of nuclear interactions and how they influence astrophysical processes.



YI CHI "ERIC" HSIAO

ASSISTANT PROFESSOR

Department of Physics

Degree Institution: University of Victoria (British Columbia, Canada), Ph.D.

Research Interests: The physics and observational properties of supernovae, explosive ends of some stellar life cycles that can outshine entire galaxies. My colleagues and I also use these supernovae to determine the origin, evolution, and eventual fate of our universe.



DONALD COMPTON

PROFESSOR

Department of Psychology

Degree Institution: Northwestern University, Ph.D.

Research Interests: Modeling individual differences in the development of children's reading development and the identification of children with reading disabilities.

NEW FACULTY DIRECTORY 2015-2016

COLLEGE OF ARTS AND SCIENCES



PAUL CONWAY

ASSISTANT PROFESSOR

Department of Psychology

Degree Institution: University of Western Ontario (Canada), Ph.D.

Research Interests: The psychology of morality and justice: how people decide what's good and bad, who is right and wrong, and whether to help or harm others.



WEN LI

ASSOCIATE PROFESSOR

Department of Psychology

Degree Institution: Northwestern University, Ph.D.

Research Interests: Characterizing sensory-cortex-based processing of threat information and to understand neural mechanisms underpinning the generation, and degeneration of threat codes in the sensory cortex.



ANDREA MELTZER

ASSISTANT PROFESSOR

Department of Psychology

Degree Institution: University of Tennessee–Knoxville, Ph.D.

Research Interests: Utilizing social-psychological and evolutionary principles to understand long-term, established romantic relationships.



BRYAN QUAIFFE

ASSISTANT PROFESSOR

Department of Scientific Computing

Degree Institution: Simon Fraser University (British Columbia, Canada), Ph.D.

Research Interests: Development of fast, robust, and accurate computational tools for problems in physics and engineering. More particularly, using integral equation methods to understand a wide variety of problems in complex fluids.



ANTONIO LINERO

ASSISTANT PROFESSOR

Department of Statistics

Degree Institution: University of Florida, Ph.D.

Research Interests: Focused on Bayesian nonparametric statistics, longitudinal data analysis, and casual inference.

NEW FACULTY DIRECTORY 2015-2016

COLLEGE OF BUSINESS



YU-KAI LIN **ASSISTANT PROFESSOR**
Department of Entrepreneurship, Strategy and Information Systems
Degree Institution: University of Arizona, Ph.D.
Research Interests: Digital health, machine learning, and big data analytics.



LIN SUN **ASSISTANT PROFESSOR**
Department of Finance
Degree Institution: University of California–Irvine, Ph.D.
Research Interests: Broadly interested in behavioral finance, interacting with asset pricing, investment and corporate finance.



SEAN MCGINLEY **ASSISTANT PROFESSOR**
Dedman School of Hospitality Administration
Degree Institution: Pennsylvania State University, Ph.D.
Research Interests: Ethics, leadership and career management.



TATIANA FAJARDO **ASSISTANT PROFESSOR**
Department of Marketing
Degree Institution: University of Miami, Ph.D.
Research Interests: Visual and symbolic consumption, branding, and cause-related marketing.



COLLEEN HARMELING **ASSISTANT PROFESSOR**
Department of Marketing
Degree Institution: Saint Louis University, Ph.D.
Research Interests: Customer relationship development, retailing, and facilitating customer engagement and brand advocacy.



LADONNA THORNTON **ASSISTANT PROFESSOR**
Department of Marketing
Degree Institution: University of Tennessee, Ph.D.
Research Interests: Supply chain relationships, supply chain relational behavior, and social responsibility in the supply chain.

NEW FACULTY DIRECTORY 2015-2016

COLLEGE OF BUSINESS



DANIEL BROXTERMAN

ASSISTANT PROFESSOR

Department of Risk Management/Insurance,
Real Estate and Legal Studies

Degree Institution: George Washington University, Ph.D.

Research Interests: Focus on how house prices impact the labor force composition of cities.



MARIYA LETDIN

ASSISTANT PROFESSOR

Department of Risk Management/Insurance,
Real Estate and Legal Studies

Degree Institution: Baruch College, Ph.D.

Research Interests: Commercial real estate financing—mortgages and unsecured bonds, real estate investment trusts, CMBS loans, and borrower behavior.

COLLEGE OF COMMUNICATION AND INFORMATION



CHRISTINE NIEVES

**INSTRUCTIONAL SPECIALIST I
ENTREPRENEUR IN RESIDENCE**

Dean's Office

Degree Institution: University of Oxford, Wolfson College (England), M.S.

Research Interests: Connecting people and ideas for the greater good, linking FSU students and faculty to the Tallahassee community and beyond, and helping students fulfill their innovative and entrepreneurial potential.



RUSSELL CLAYTON

ASSISTANT PROFESSOR

School of Communication

Degree Institution: University of Missouri, Ph.D.

Research Interests: Psychological and social effects of media, health communication, human-computer interaction, social media, and models of addiction.



JINGHUI "JOVE" HOU

ASSISTANT PROFESSOR

School of Communication

Degree Institution: University of Southern California, Ph.D.

Research Interests: Media and communication technology, health communication and methodologies.

NEW FACULTY DIRECTORY 2015-2016

COLLEGE OF COMMUNICATION AND INFORMATION



ZHE HE

ASSISTANT PROFESSOR

School of Information

Degree Institution: New Jersey Institute of Technology, Ph.D.

Research Interests: Biomedical informatics, pattern mining, and visual data.

COLLEGE OF CRIMINOLOGY AND CRIMINAL JUSTICE



JENNIFER COPP

ASSISTANT PROFESSOR

Degree Institution: Bowling Green State University, Ph.D.

Research Interests: Intimate partner violence, consequences of incarceration, and health and well-being.



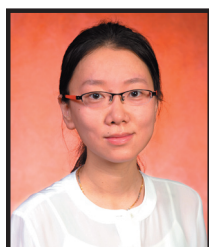
JILLIAN TURANOVIC

ASSISTANT PROFESSOR

Degree Institution: Arizona State University, Ph.D.

Research Interests: Victimization, collateral consequences of incarceration, and life-course criminology.

COLLEGE OF EDUCATION



QIAN "JACKIE" ZHANG

ASSISTANT PROFESSOR

Department of Educational Psychology and Learning Systems

Degree Institution: University of Notre Dame, Ph.D.

Research Interests: Quantitative methods and psychology, longitudinal and missing data analysis, Bayesian estimation and computational modeling, and developmental, family, and health.



LISA FERNBACH

VISITING, TEACHING FACULTY I

School of Teacher Education

Degree Institution: Florida State University, Ed.S.

Research Interests: Special education, elementary education, and teacher preparation.

NEW FACULTY DIRECTORY 2015-2016

COLLEGE OF EDUCATION



LAMA JABER

ASSISTANT PROFESSOR

School of Teacher Education

Degree Institution: Tufts University, Ph.D.

Research Interests: Student engagement in scientific inquiry and their feelings and emotions within that engagement, designing and studying learning environments that promote students' productive dispositions and intellectual agency in science.



JANE LO

ASSISTANT PROFESSOR

School of Teacher Education

Degree Institution: University of Washington, Ph.D.

Research Interests: Civic education and youth political participation.



KATIE RYBAKOVA

VISITING, TEACHING FACULTY I

School of Teacher Education

Degree Institution: Florida State University, Ph.D.

Research Interests: Curriculum and instruction with major in english education.



GREGORY TAYLOR

TEACHING FACULTY I

School of Teacher Education

Degree Institution: University of Florida, Ph.D.

Research Interests: Special education, learning environments, and improving outcomes for students with exceptionalities.



MIRAY TEKKUMRU-KISA

ASSISTANT PROFESSOR

School of Teacher Education/Learning Systems Institute

Degree Institution: University of Pittsburgh, Ph.D.

Research Interests: Science teaching and learning, teacher cognition and learning, large-scale instructional improvement, and the design, selection and effective use of cognitively demanding tasks in science classrooms.



KATIE FLANAGAN

TEACHING FACULTY I

Department of Sport Management

Degree Institution: Florida State University, Ph.D.

Research Interests: Sport management, sociology and marketing, recreation and leisure administration, and mass media studies.

NEW FACULTY DIRECTORY 2015-2016

FAMU-FSU COLLEGE OF ENGINEERING



KIMBERLY HUNTER

TEACHING FACULTY I

Department of Chemical and Biomedical Engineering

Degree Institution: Florida State University, Ph.D.

Research Interests: Investigation and implementation of innovations in engineering education.



YOUNENG TANG

ASSISTANT PROFESSOR

Department of Civil and Environmental Engineering

Degree Institution: Arizona State University, Ph.D.

Research Interests: Biological treatment of water, wastewater, and groundwater.



RAPHAEL KAMPMANN

TEACHING FACULTY I

Department of Civil and Environmental Engineering

Degree Institution: Florida State University, Ph.D.

Research Interests: Construction materials, and failure behavior of concrete.



REZA ARGHANDEH

ASSISTANT PROFESSOR

Department of Electrical and Computer Engineering

Degree Institution: Virginia Polytechnic and State University, Ph.D.

Research Interests: Big data analytics, and control and statistical learning for electric grids.



JOHN TAYLOR

TEACHING FACULTY I

Department of Industrial and Manufacturing Engineering

Degree Institution: Wichita State University, M.S.

Research Interests: Lean manufacturing techniques, industrial ergonomics and human factors, reliability engineering and system safety.



SEUNGYONG HAHN

ASSOCIATE PROFESSOR

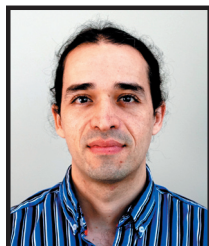
Department of Mechanical Engineering

Degree Institution: Seoul National University (Seoul, South Korea), Ph.D.

Research Interests: High temperature superconducting magnets.

NEW FACULTY DIRECTORY 2015-2016

FAMU-FSU COLLEGE OF ENGINEERING



CAMILO ORDONEZ

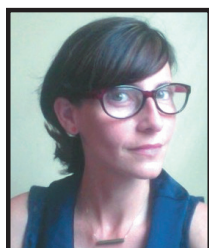
TEACHING FACULTY I

Department of Mechanical Engineering

Degree Institution: Florida State University, Ph.D.

Research Interests: Modeling and motion planning for wheeled and legged robotics.

COLLEGE OF FINE ARTS



JESSICA CHALET COMELLAS

TEACHING FACULTY I

Department of Art

Degree Institution: Florida State University, M.F.A.

Research Interests: Theories of contemporary art and studio art practices.



KYLE KILLIAN

TEACHING FACULTY I

Department of Art History

Degree Institution: Florida State University, Ph.D.

Research Interests: Medieval art and architecture, archaeology, and cultural heritage.



JOSÉPHINE GARIBALDI

ASSOCIATE PROFESSOR AND CHAIR

School of Dance

Degree Institution: University of California–Irvine, M.F.A.

Research Interests: Devising of original performance works, intermedial performance works, environmental installations, and site-based performance.



GWEN WELLIVER

ASSISTANT PROFESSOR

School of Dance

Degree Institution: Bennington College, M.F.A.

Research Interests: Dance, contemporary dance, structured improvisation, choreography, pedagogical experimentation, and modernist diagrams.

NEW FACULTY DIRECTORY 2015-2016

COLLEGE OF FINE ARTS



SCOTT SHAMP **PROFESSOR AND ASSOCIATE DEAN**
Dean's Office/Department of Art Education
Degree Institution: University of Utah, Ph.D.
Research Interests: Personal media technology (mobile and social).



SAMER AL-SABER **ASSISTANT PROFESSOR**
School of Theatre
Degree Institution: University of Washington, Ph.D.
Research Interests: Performance, Arabian theatre and culture, Middle Eastern cultural production in antiquity and the present, Palestinian theatre in Jerusalem, and Marxism Postcolonialism.



ELIZA LADD SCHWARZ **TEACHING FACULTY I**
School of Theatre
Degree Institution: Naropa University, M.F.A.
Research Interests: Physical theater, devising theater, the crossroads of dance theater and music, primitive voice, body–mind–spirit training in theater, the function of theater, freeing the instrument, dynamics of composition, contemplative dance, body dynamics, live sound action, and more.



ANTHONY RHINE **ASSISTANT PROFESSOR**
School of Theatre
Degree Institution: North Central University, Ph.D.
Research Interests: Authentic Leadership and its effects on nonprofit art organizations, improving nonprofit arts organizational outcomes through strategic planning theory, and the development of theoretical frames to improve nonprofit organizational outcomes through product, pricing, and distribution.

COLLEGE OF HUMAN SCIENCES



KRISTEN GREENE **TEACHING FACULTY I**
Department of Family and Child Sciences
Degree Institution: Florida State University, Ph.D.
Research Interests: Marriage and family therapy, stress and resilience in families, and mental illness in families.

NEW FACULTY DIRECTORY 2015-2016

COLLEGE OF HUMAN SCIENCES



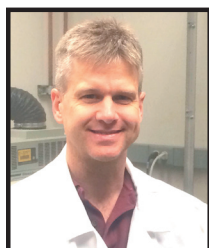
JOSEPH GRZYWACZ

PROFESSOR AND CHAIR

Department of Family and Child Sciences

Degree Institution: University of Wisconsin–Madison, Ph.D.

Research Interests: Everyday work and family life, their implications for health and well-being, and a focus on health inequalities, particularly racial and ethnic health inequalities.



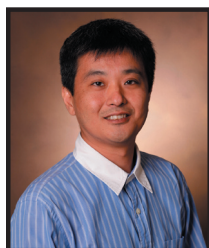
KIRK EVANSON

ASSISTANT PROFESSOR

Department of Nutrition, Food and Exercise Sciences

Degree Institution: University of Arkansas, Ph.D.

Research Interests: Effects of ion channels on arterial smooth muscle cell contractility.



HYUN SEOK HWANG

ASSISTANT PROFESSOR

Department of Nutrition, Food and Exercise Sciences

Degree Institution: University of Michigan, Ph.D.

Research Interests: Exercise-induced cardiac sudden death, Ca-regulation in oxidative stress-induced arrhythmogenesis and contractile dysfunction.



SRIKANT MANCHIRAJU

ASSISTANT PROFESSOR

Department of Retail, Merchandising and Product Development

Degree Institution: Iowa State University, Ph.D.

Research Interests: Psychology and marketing, including topics such as body image, ethical consumption, sustainable consumption, materialism and luxury consumption, positive psychology, and social media.



ROXANNE PARKER

TEACHING FACULTY I

Department of Retail, Merchandising and Product Development

Degree Institution: Florida State University, B.S.

Research Interests: Preparing students for a career in the retail industry, using my 20+ years of Executive retail experience.

NEW FACULTY DIRECTORY 2015-2016

COLLEGE OF LAW



AVLANA EISENBERG

ASSISTANT PROFESSOR

Degree Institution: Stanford Law School, J.D.

Research Interests: On the tensions underlying the enactment and enforcement of criminal law, the interplay between criminal and civil sanctions, and the evolving role of prisons and alternatives to incarceration.



ERIN RYAN

PROFESSOR

Degree Institution: Harvard Law School, J.D.

Research Interests: Constitutional federalism, interjurisdictional governance, and intergovernmental bargaining; environmental law, natural resources law, and land use; and Chinese environmental governance and the developing rule of law in China.



JUSTIN SEVIER

ASSISTANT PROFESSOR

Degree Institution: Yale University, Ph.D.

Research Interests: Law and psychology, institutional design, and behavioral law and economics.

COLLEGE OF MEDICINE



NAOMI BROWNSTEIN

ASSISTANT PROFESSOR

Department of Behavioral Sciences and Social Medicine

Degree Institution: University of North Carolina–Chapel Hill, Ph.D.

Research Interests: Developing and applying appropriate statistical methods to analyze problems in public health and medicine, specifically including environmental biostatistics, genetics, proteomics, and nutritional epidemiology.



JEFFREY HARMAN

PROFESSOR

Department of Behavioral Sciences and Social Medicine

Degree Institution: University of Minnesota, Ph.D.

Research Interests: The delivery of mental health services and other health services to vulnerable populations, Medicaid policy, and comparative effectiveness of treatments for mental health, pain, and substance abuse, along with health economics and econometrics.

NEW FACULTY DIRECTORY 2015-2016

COLLEGE OF MEDICINE



DEVON GRAHAM

RESEARCH FACULTY I

Department of Biomedical Sciences

Degree Institution: University of Maryland, Ph.D.

Research Interests: The role of peptides, such as GLP-1, in mediating the development of neuropsychiatric disorders.



ANTONIA NEMEČ

RESEARCH FACULTY I

Department of Biomedical Sciences

Degree Institution: Yale University, Ph.D.

Research Interests: DNA repair and cancer genetics.



GREGG STANWOOD

ASSOCIATE PROFESSOR

Department of Biomedical Sciences

Degree Institution: University of Pennsylvania, Ph.D.

Research Interests: Developmental neuroscience, pharmacology, and biological basis of behavior.



ROBERT TOMKO

ASSISTANT PROFESSOR

Department of Biomedical Sciences

Degree Institution: University of Pittsburgh, Ph.D.

Research Interests: Regulation of proteasome assembly and function in health and disease, and design principles governing assembly of multiprotein complexes.



YUAN WANG

ASSISTANT PROFESSOR

Department of Biomedical Sciences

Degree Institution: Capital University of Medical Sciences (Beijing, China), Ph.D.

Research Interests: Development and plasticity of neuronal circuits and their pathology in neurodevelopmental disorders and neurodegeneration.



DIEGO ZORIO

RESEARCH FACULTY I

Department of Biomedical Sciences

Degree Institution: Indiana University–Bloomington, Ph.D.

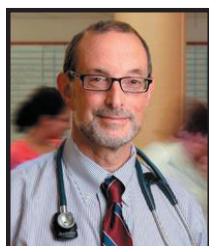
Research Interests: Neuronal plasticity and architecture in the auditory system during brain development.

NEW FACULTY DIRECTORY 2015-2016

COLLEGE OF MEDICINE



IRENE ALEXANDRAKI **CLINICAL ASSOCIATE PROFESSOR**
Department of Clinical Sciences
Degree Institution: University of Athens (Greece), M.D.
Research Interests: Infectious disease medicine.



PAUL KATZ **PROFESSOR AND CHAIR**
Department of Geriatrics
Degree Institution: University of Michigan, M.D.
Research Interests: Geriatric medicine.

COLLEGE OF MUSIC



DIANA DUMLAVWALLA **ASSISTANT PROFESSOR**
Degree Institution: University of Toronto (Ontario, Canada), D.M.A.
Research Interests: Exploring historical issues and current trends surrounding piano pedagogy, performance and literature.



LORI GOODING **ASSISTANT PROFESSOR**
Degree Institution: Florida State University, Ph.D.
Research Interests: Music therapy in integrative medicine and psychosocial care/treatments, music therapy education and clinical training.



STANLEY C. PELKEY **ASSOCIATE PROFESSOR AND ASSOCIATE DEAN**
Degree Institution: University of Rochester, Ph.D.
Research Interests: American cultural and intellectual history since the 1940s, American and British film and television (and their music), and music in Great Britain, especially the work of Ralph Vaughan Williams.



MARK RICHARDS **ASSISTANT PROFESSOR**
Degree Institution: University of Toronto (Ontario, Canada), Ph.D.
Research Interests: Issues of form and style in music of the classical period, especially Beethoven, as well as thematic structure and leitmotivic associations in film, and harmonic function and progression in rock music.

NEW FACULTY DIRECTORY 2015-2016

COLLEGE OF MUSIC



SHANNON THOMAS

ASSISTANT PROFESSOR

Degree Institution: Cleveland Institute of Music, D.M.A.

Research Interests: Performance of solo violin, chamber music and orchestral works from the 18th century to present. Continuing to commission and premiere new repertoire by living composers. Cross-disciplinary collaborations across the arts and sciences.

COLLEGE OF NURSING

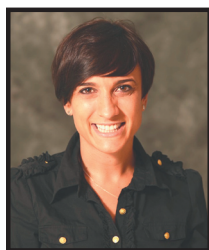


LARA BALBIS

TEACHING FACULTY I

Degree Institution: University of Florida, M.S.N.

Research Interests: Educate baccalaureate and graduate nursing students in lecture and in the clinical setting.



GERALDINE MARTORELLA

ASSISTANT PROFESSOR

Degree Institution: University of Montreal (Quebec, Canada), Ph.D.

Research Interests: Developing and evaluating innovative nursing interventions for pain management and chronic pain prevention in adults. Using experimental and mixed method designs, this has been focused on psychosocial factors and the use of information technologies.



SUSAN SHELTON

VISITING ASSISTANT PROFESSOR

Degree Institution: Georgia State University, Ph.D.

Research Interests: Assessment and non-pharmacological intervention for postpartum depressive symptoms, and overall health promotion and education for mothers.



THERESA WINTON

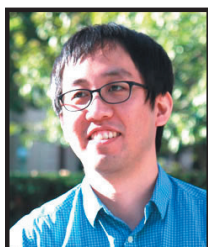
TEACHING FACULTY I

Degree Institution: Florida State University, D.N.P.

Research Interests: Undergraduate and graduate nursing, global health, and nursing education.

NEW FACULTY DIRECTORY 2015-2016

COLLEGE OF SOCIAL SCIENCES AND PUBLIC POLICY



SEUNGJUN BAEK

ASSISTANT PROFESSOR

Department of Economics

Degree Institution: Columbia University, Ph.D.

Research Interests: Macroeconomics, financial economics, and monetary economics.



SHAWN KANTOR

PROFESSOR

Department of Economics

Degree Institution: California Institute of Technology, Ph.D.

Research Interests: Exploring how economic, political, and legal institutions interact to influence the process of economic development, and examining the impact that research universities have on regional economic growth, both historically and today.



VIJAY KRISHNA

ASSISTANT PROFESSOR

Department of Economics

Degree Institution: Pennsylvania State University, Ph.D.

Research Interests: Microeconomics with interests in decision theory (which studies choice in static and dynamic situations under uncertainty and risk) as well as dynamic contract theory.



ROBERT CARROLL

ASSISTANT PROFESSOR

Department of Political Science

Degree Institution: University of Rochester, Ph.D.

Research Interests: International relations, political methodology, and formal theory.



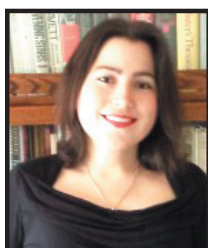
INKEN VON BORZYSKOWSKI

ASSISTANT PROFESSOR

Department of Political Science

Degree Institution: University of Wisconsin–Madison, Ph.D.

Research Interests: The intersection of international organizations and domestic governance.



MIRANDA YAVER

ASSISTANT PROFESSOR

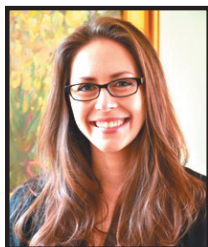
Department of Political Science

Degree Institution: Columbia University, Ph.D.

Research Interests: Separation of powers, American political institutions, American political development, regulation through litigation, ideal point estimation, and bureaucratic politics.

NEW FACULTY DIRECTORY 2015-2016

COLLEGE OF SOCIAL SCIENCES AND PUBLIC POLICY



MIRANDA WAGGONER

ASSISTANT PROFESSOR

Department of Sociology

Degree Institution: Brandeis University, Ph.D.

Research Interests: Social, cultural and ethical dimensions of medicine, science, and public health, with a specific focus on maternal and child health issues.



TISHA HOLMES

ASSISTANT PROFESSOR

Department of Urban and Regional Planning

Degree Institution: University of California–Los Angeles, Ph.D.

Research Interests: Climate change adaptation, coastal zone planning, environmental risk management, and participatory action.



APRIL JACKSON

ASSISTANT PROFESSOR

Department of Urban and Regional Planning

Degree Institution: University of Illinois–Chicago, Ph.D.

Research Interests: New urbanism for neighborhood planning and affordable housing, planning theory, housing policy, qualitative and spatial analysis methods.

COLLEGE OF SOCIAL WORK



JAMES CLARK

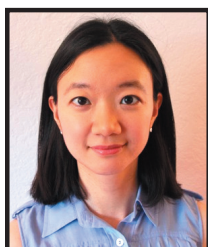
PROFESSOR AND DEAN

Degree Institution: University of Chicago, Ph.D.

Research Interests: Clinical social work with specialization in forensic mental health and child traumatic stress research.

NEW FACULTY DIRECTORY 2015-2016

NATIONAL HIGH MAGNETIC FIELD LABORATORY



HONGWOO BAEK

RESEARCH FACULTY I

Degree Institution: Seoul National University (South Korea), Ph.D.

Research Interests: Low dimensional materials in high magnetic fields.



ARNO GODEKE

RESEARCH FACULTY II

Degree Institution: University of Twente (Enschede, Netherlands), Ph.D.

Research Interests: Development of new technologies that push the limits in superconducting high field magnets.



YOUNGJAE KIM

RESEARCH FACULTY I

Degree Institution: Yonsei University (Seoul, South Korea), Ph.D.

Research Interests: Superconducting magnet, NMR, MRI, field shimming, and finite element method.

PANAMA CITY CAMPUS, FL



CAROL EDWARDS

PROFESSOR AND DEAN

Dean's Office

Degree Institution: Florida State University, Ph.D.

Research Interests: Aesthetics and critical theory, critical thinking, and teaching and learning.



RUSTY GENTRY

TEACHING FACULTY I

Nurse Anesthesia

Degree Institution: Middle Tennessee State University, D.N.A.P.

Research Interests: Professionalism and behavioral implications on decision making.

NEW FACULTY DIRECTORY 2015-2016

PANAMA CITY CAMPUS, FL



SCARLETT HINSON

TEACHING FACULTY I

Nurse Anesthesia

Degree Institution: Rush University, D.N.P.

Research Interests: Instructional transference and admissions tools.



CARR SMITH

TEACHING FACULTY I

Nurse Anesthesia

Degree Institution: Florida State University, Ph.D.

Research Interests: Admissions screening, and experimental human pathology with a focus in cardiopulmonary pharmacology and toxicology.



LYNN GIVENS

VISITING TEACHING FACULTY I

Teacher Education

Degree Institution: Georgia State University, M.Ed.

Research Interests: Dyslexia and struggling readers.

UNIVERSITY LIBRARIES



MICHAEL METH

ASSOCIATE DEAN, RESEARCH AND LEARNING SERVICES

Administration

Degree Institution: University of Toronto (Ontario, Canada), M.I.St.

Research Interests: Academic libraries in the context of the university, and gaming, gamification and virtual reality in teaching, research and learning.



PAUL LIGHTCAP

ACQUISITIONS LIBRARIAN

Collection Development

Degree Institution: University of South Florida, M.A.

Research Interests: Data and metadata systems and structures, information standards initiatives, assessing business functions and modes of information access within the academy.

NEW FACULTY DIRECTORY 2015-2016

UNIVERSITY LIBRARIES



STACEY MANTOOTH

SCIENCE LIBRARIAN

Dirac Science Library

Degree Institutions: University of North Carolina–Chapel Hill, M.S.L.S.,
University of Wisconsin, M.F.A.

Research Interests: STEM information needs, interdisciplinary
collaboration and knowledge sharing.



EMILY MANN

RESEARCH AND INFORMATION SERVICES LIBRARIAN

Learning Commons

Degree Institution: University of North Carolina–Greensboro, M.A.

Research Interests: Underserved populations, information literacy, and
student employees/training.



MOHAMED BERRAY

SOCIAL SCIENCES LIBRARIAN

Scholars Commons

Degree Institution: University of North Carolina–Greensboro, M.S.L.I.S.

Research Interests: Political science, international studies, law, and
public administration and policy.



KYUNG KIM

VISITING BUSINESS LIBRARIAN

Scholars Commons

Degree Institution: Rutgers University, Ph.D.

Research Interests: How people find information on the Web and at
information retrieval systems such as databases, digital libraries, and
library catalogs, and how usable the information retrieval systems are
to support the human information behavior in the contexts of health
and business.



AMAURI SERRANO

HUMANITIES LIBRARIAN

Scholars Commons

Degree Institution: University of Illinois–Urbana-Champaign, M.L.I.S.,
M.A.

Research Interests: Information seeking behavior of foreign language
and literature researchers in particular romance languages and
literatures, library collection management in the arts and humanities,
and contribution of libraries to campus internationalization efforts.

NEW FACULTY DIRECTORY 2015-2016

UNIVERSITY LIBRARIES



RORY GRENNAN

MANUSCRIPTS AND INSTRUCTION ARCHIVIST

Special Collections

Degree Institution: San Jose State University, M.L.I.S.

Research Interests: Archival instruction, reference and research services, documentation strategies, and historical sound recordings.



KATHERINE HOARN

VISITING RARE BOOKS AND INSTRUCTION LIBRARIAN

Special Collections

Degree Institution: Florida State University, M.A.

Research Interests: History of the book, bookbinding, and information science.



MATTHEW MIGUEZ

METADATA LIBRARIAN

Special Collections

Degree Institution: Simmons College, M.S.L.I.S.

Research Interests: Digital preservation, technology and information access, and information politics.



ROBERT RUBERO

HEAD, CLAUDE PEPPER LIBRARY

Special Collections

Degree Institution: Florida State University, M.L.I.S.

Research Interests: U.S. military history and 20th/21st Century U.S. political history.



DEVIN SOPER

SCHOLARLY COMMUNICATIONS LIBRARIAN

Technology and Digital Scholarship

Degree Institutions: University of British Columbia (Canada), M.L.I.S.,

University of Victoria (British Columbia, Canada), M.A.

Research Interests: Scholarly publishing, copyright, digital scholarship, academic libraries, HCI, cognitive psychology, and modernist literature.

NEW FACULTY DIRECTORY 2015-2016

NOTES

FSU ADMINISTRATION

University President	John E. Thrasher
Interim Provost and Executive Vice President for Academic Affairs	Sally E. McRorie
Interim Vice President for Faculty Development and Advancement	Janet Kistner
Vice President for Finance and Administration	Kyle Clark
Vice President for Institutional Advancement	Tom Jennings
Vice President for Research	Gary Ostrander
Vice President for Student Affairs	Mary Coburn
College of Applied Studies/Panama City (FL) Campus	Dean Carol Edwards
College of Arts and Sciences	Dean Sam Huckaba
College of Business	Interim Dean Michael Hartline
College of Communication and Information	Dean Lawrence Dennis
College of Criminology and Criminal Justice	Dean Thomas Blomberg
College of Education	Dean Marcy Driscoll
FAMU-FSU College of Engineering	Interim Dean Bruce Locke
College of Fine Arts	Dean Peter Weishar
College of Human Sciences	Dean Michael Delp
College of Law	Dean Donald Weidner
College of Medicine	Dean John Fogarty
College of Motion Picture Arts	Acting Dean Reb Braddock
College of Music	Dean Patricia Flowers
College of Nursing	Dean Judith McFetridge-Durdle
College of Social Sciences and Public Policy	Dean David Rasmussen
College of Social Work	Dean James Clark
Division of Undergraduate Studies	Dean Karen Laughlin
The Graduate School	Dean Nancy Marcus
University Libraries	Dean Julia Zimmerman