

Florida State University Police Department

Spring Chairs and Deans Meeting

Active Shooter and Violent Event Preparation on Campus

DAVID L. PERRY • ASSISTANT VICE PRESIDENT FOR SAFETY & CHIEF OF POLICE



TERRI BROWN • DEPUTY CHIEF OF POLICE

JASON TRUMBOWER • CAPTAIN FOR OPERATIONS

JUSTIN MALOY • CAPTAIN FOR SUPPORT SERVICES



Recent and Past Tragic Events

Florida State University Police Department



if you
SEE
something
SAY
something

Proactive Safety Programs on Campus

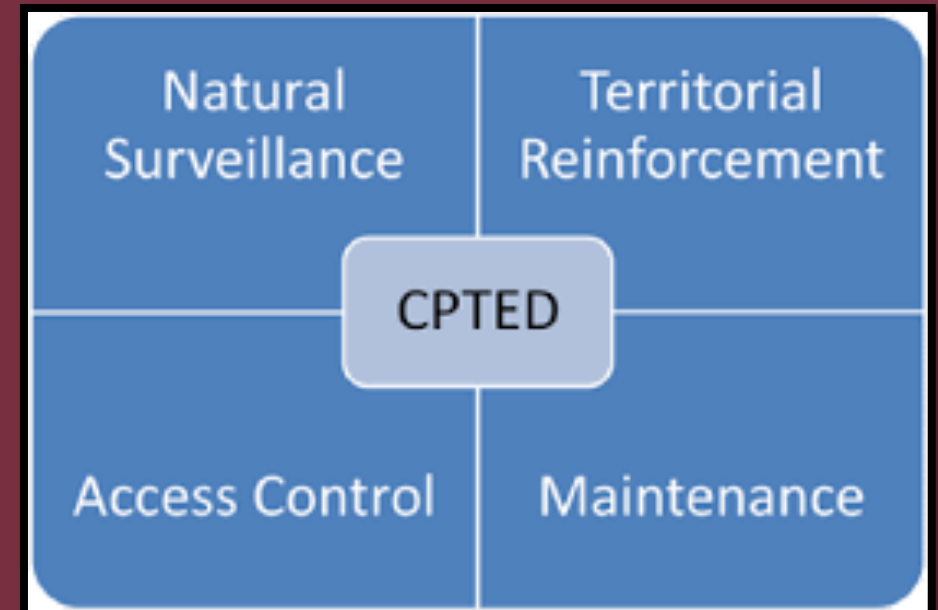
- FSUPD Crime Prevention

Safety Assessments

Safety Planning

Training 15 Sessions 2018 / 10 more scheduled

Florida State
University Police
Department



Proactive Efforts on Campus

FSUPD Critical Incident Training
January 15th 2018

Florida State
University Police
Department



Proactive Efforts on Campus

Improving Emergency Communications within Classrooms and Offices

Florida State
University Police
Department



Implementing this Summer

Local Law Enforcement Partnerships



Florida State University Police Department



SHERIFF OF LEON COUNTY, FLORIDA
And
FLORIDA STATE UNIVERSITY POLICE DEPARTMENT

VOLUNTARY COOPERATION AND OPERATIONAL ASSISTANCE
MUTUAL AID AGREEMENT

WITNESSETH

Whereas, Walt McNeil, the Sheriff of Leon County, Florida as the chief law enforcement officer in Leon County has law enforcement jurisdiction, power, and authority within the incorporated and unincorporated areas of Leon County; and

Whereas, the powers of a state university police department generally include violations which occur on property or facilities that are under the guidance, supervision, regulation, or control of the university; and

Whereas, Chapter 23, Part I, Florida Statutes, the Florida Mutual Aid Act, constitutes such statutory authorization by creating a law enforcement mutual aid plan that provides for the coordination of law enforcement planning, operations, and mutual aid across jurisdictional lines; and

Whereas, law enforcement officers acting on behalf of their agency and/or rendering aid outside their territorial jurisdiction pursuant to the terms and conditions of a mutual aid agreement have the same powers as if they were performing such duties within their jurisdiction; and

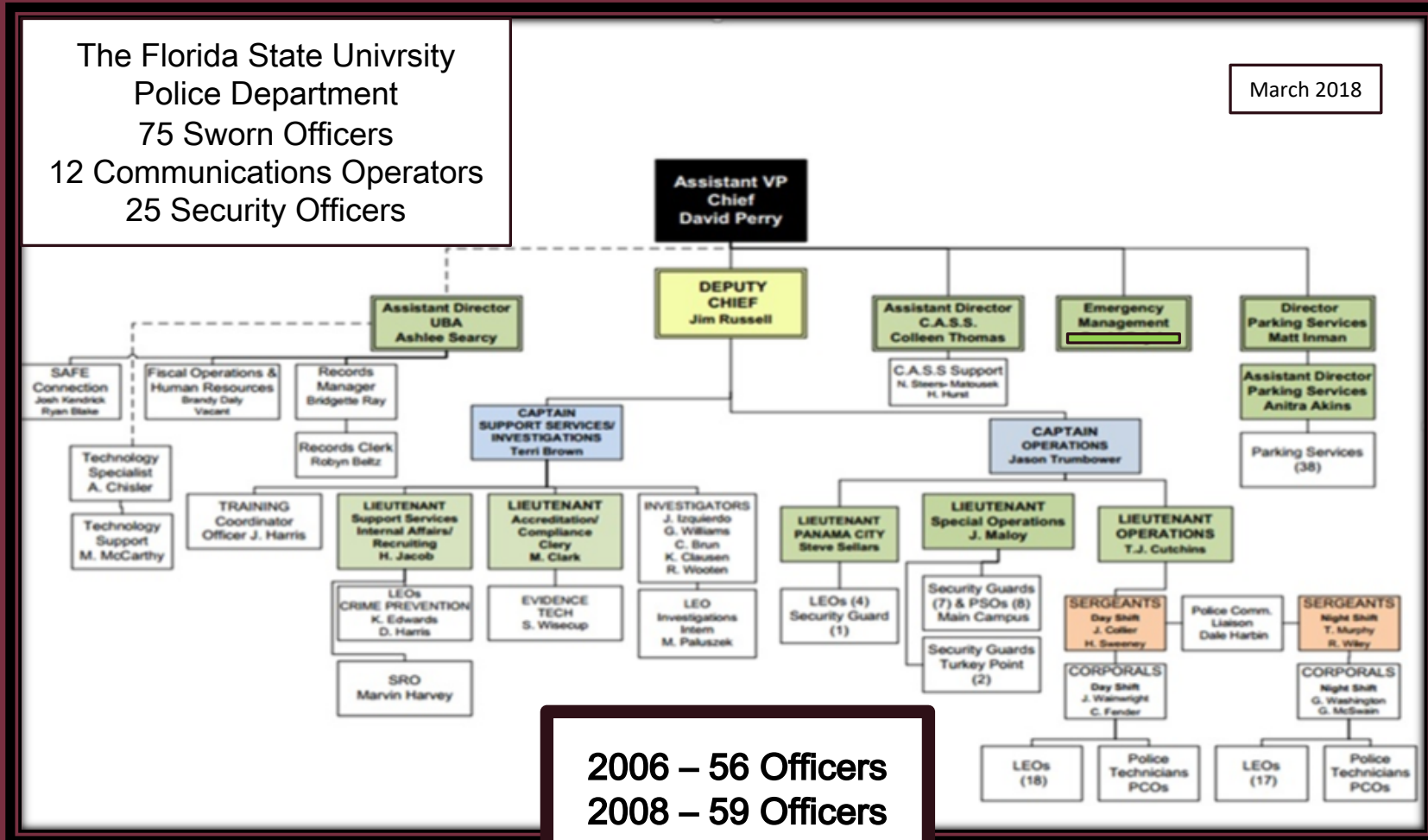
Whereas, the Sheriff of Leon County, Florida and the Florida State University Police Department are so located in relation to each other that it is to the advantage of each to receive and extend mutual aid in the form of law enforcement services and resources to adequately respond to:

(1) voluntary cooperation, non-aligned, multi-jurisdictional criminal activities, to protect the public

Florida State University Police Department



Administrative Support - Resources



2006 – 56 Officers
2008 – 59 Officers
2010 – 62 Officers
2013 – 65 Officers
2015 – 70 Officers
2017 – 75 Officers

Florida State University Police Department



Resources



Finance & Administration

Employee Assistance Program
Employee Labor Relations

Student Affairs

Dean of Students
Student Conduct
Counseling Center
Victim Advocates / Case Mgr.

FLORIDA STATE UNIVERSITY
FACULTY & STAFF EMERGENCY GUIDE
 Resources Available for Assisting Distressed Students

The Dean of Students Department, University Counseling Center, and Thurgood Health Center from the Division of Student Affairs, the Division of Academic Affairs, the University Police Department, Employee Assistance Services Staff, and members of the FSU Student Situation Resolution Team have developed this FSU faculty and staff information guide to use when assisting distressed students or when dealing with a person with a weapon. This information includes basic guidelines but cannot address every situation. Therefore, in the event you believe you, the person(s) involved, or anyone else is at risk due to another person's behavior, you should call the Florida State University Police at 644-1234 or 911.

Signs of a Distressed Student

University students often encounter a great deal of stress during the course of their academic experience. While most students cope successfully with the challenges that these years bring, an increasing number of students feel the acute pressure of life circumstances or academic life. As individuals who work closely with students, you may encounter these distressed students in your offices or classrooms.

Signs of a Distressed Student (Behavioral/Physical/Emotional/University Counseling Center 1-800-)

- Marked changes in academic performance
- Irregular attendance when called upon, drinking (discretion)
- Irregular attendance with little or no work completed, or overall decline in performance
- Dependency (eg, the student begins around your schedule or seeks support outside of your class/office hours)
- Changes in sleep, lack of energy, or frequently being absent in class
- Absence of changes in behavior or appearance
- eg, hygiene, dress
- Isolates themselves to behaviors and large mood, depressed thoughts
- Exhibits unusual thoughts or behaviors
- Behavior which interferes with the academic or effective management of class
- Seeking the asking attention to a instructor or another student
- Withdrawal or alleged alcohol/drug use
- Overly suicidal thoughts (eg, relating to suicide as a consequence of isolated incidents or situations)
- Overly negative statements about having someone else
- High level of irritability, including verbal, aggressive, violent, abusive, or offensive disruptive behavior
- Normal emotions that are displayed to an extreme degree or for a prolonged period of time (eg, anger, fear, nervous, too nervous, nervousness)
- Expresses uncertainty and anxiety about emotional or ability/family situation, and/or relationship problems
- Constantly concerned that is disturbing
- Social isolation
- Drawing/throwing/destroying someone's lecture

IF THE STUDENT'S BEHAVIOR REPRESENTS AN IMMEDIATE THREAT, CALL 644-1234 OR 911
 If the threat is not immediate, but you are concerned that student may harm him or herself or others call:
Monday - Friday - 8 a.m. - 5 p.m.
 Dean of Students Department, 800-644-3428
 or University Counseling Center 800-644-2000
Evenings and Weekends call:
 FSU Police Department (644) 1234 and ask for the Crisis Management Unit

For additional information, contact the Dean of Students Department at 644-3428

April 12, 2010

Crisis Response Quick Reference

If you find yourself interacting with a student in distress, we suggest you follow these guidelines:

Interaction with a Distressed Student

- If the student exhibits behaviors which suggest he or she might harm him or herself or anyone else, or you feel threatened: **Call 644-1234 or 911 immediately**
- If the student needs additional guidance and/or support but does not exhibit behaviors which suggest he or she might harm him or herself or anyone else and you do not feel threatened: Depending on the situation, contact or refer the student to the following resources (see grid below)

When Immediate Attention is Required	
Issue	Contact
Suicidal or homicidal threats	644-1234 FSU Police Department 911
Medical Emergency	911
Victim of violence and/or stalking	644-1234 FSU Police Department
Sexual assault reported by student	644-7161 Victim Advocate Program After hours referral 644-1234 (FSU Police Department)

Threat Assessment Team



Where **YOU** can Make a Difference

- Timely notification of situations and incidents (regardless of the location) involving an **employee** or **student**
- Proper communication with FSU Staff or Administrators
- Tell someone!



The little things matter!

Florida State University Police Department



If you would like to request Training
please email me at:

dlperry@fsu.edu

Contact us via the Seminole Safe App

